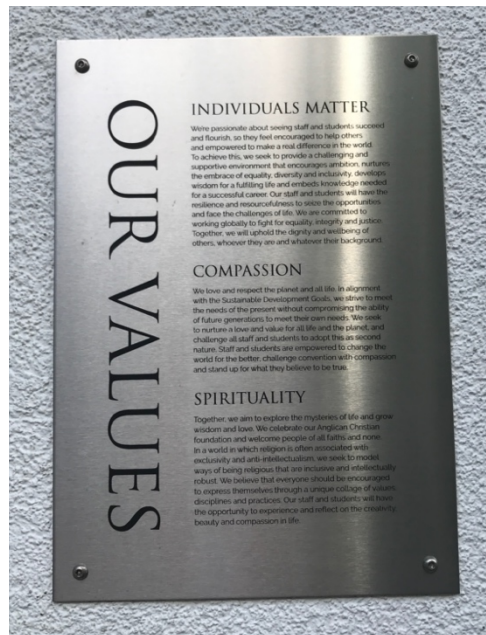


## WINCHESTER



← The values of the institution are clearly displayed on campus

Leafy campus



↑ The chaplaincy is in the middle of the campus, open to all students.

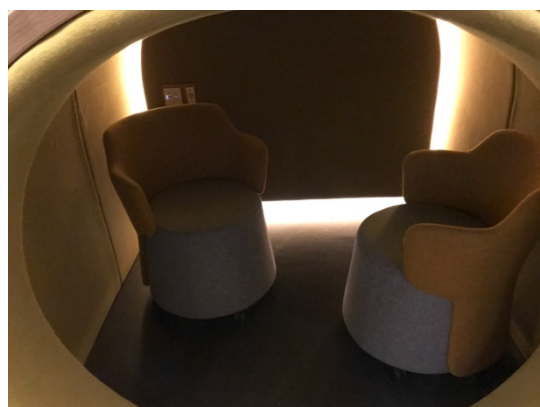
↓ Reflection space with private pods in a brand new building on campus



Memorial service was held for a student who passed away at the University in April.



Prayer tree dedicated to Ukraine at the moment.





## MANCHESTER



University of Manchester



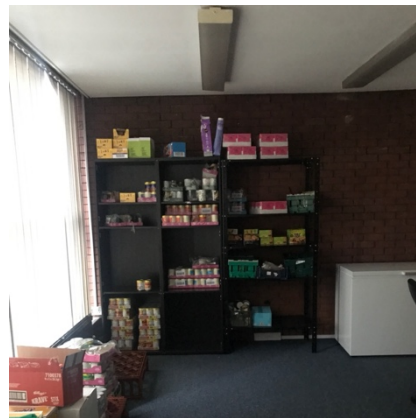
Memorial to the victims of the Arena Bombing



Artwork commissioned by and displayed at and on the building of the Chaplaincy at StPeter's House, during the pandemic



Display of the chaplaincy's ethos



During the pandemic the chaplaincy started food box deliveries with recipes to students who couldn't leave their rooms. This has now evolved into a food-bank type provision for those in need, with weekly fresh produce, recipes, etc.



Yoga, mindfulness and wellness studio at the chaplaincy with regular classes for students and staff



Lecture room/church space/events space in the chaplaincy building.



The Catholic Chaplaincy next to the Catholic Church. The 1960s building has been deemed unsafe for use this academic year. The chaplaincy moved to the church building with much reduced capacity.