



Kellogg College
University of Oxford

Kellogg
1990 CLUB

Year in Review: 2024

The **impact** of your support





Since the establishment of the 1990 Club in 2020, we have seen regular philanthropic contributions to College double in significance. It is heartening and encouraging to witness alumni, Fellows, and friends, be it in Oxford, the UK, or diverse corners of the globe, actively endorsing the College's vision through consistent contributions.

At Kellogg, we believe in fostering a sustainable world where learning is a lifelong pursuit, empowering individuals to harness their talents, navigate change, and propel humanity forward through discovery and education. Your commitment and support, especially through the 1990 Club, play a crucial role in maintaining a distinctive and enriching Oxford experience for our students.

Recurring gifts allow us to plan ahead and undertake projects that are crucial for College's future. Regardless of size, each contribution makes a significant impact, underscoring the profound influence that the connection and generosity shared within our Kellogg community can bring about.

Thank you for your continued support.

Jonathan Michie

Professor Jonathan Michie OBE, FAcSS
President, Kellogg College
Pro-Vice-Chancellor, University of Oxford



Your impact

Last year was a banner-year for regular gifts and College. We acquired 26 additional donors who have given in the past, and chose to give again. With this significant growth in regular giving, we were able to increase philanthropic support from regular gifts by 21% and nearly double the number of regular givers.

The increase in support has empowered us to strengthen crucial aspects of College life, addressing areas with the highest needs. Through amplifying student support in the form of bursaries and travel and research grants, alongside enhancing the overall student experience, regular giving remains instrumental in ensuring that we provide our students with the most enriching College experience possible.

The College takes pride in the achievements of its community. Regular giving has played a pivotal role in helping our students advance world-leading research within the University and emerge as leaders in their respective fields. Kellogg students and alumni are making a substantial contribution to societies and economies worldwide, exemplifying the influential impact of our community on a global scale.



Bursaries

Students should not be held back by personal circumstances or unexpected economic challenges. At Kellogg we are committing to alleviating financial burdens our students may encounter during their studies at the University. Last year we offered grants at an average disbursement of £334 per student.





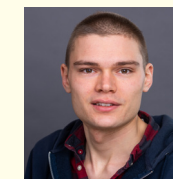
Travel and Research Grants

A world-class Oxford education should come with every opportunity for our students to develop their academic excellence. With our travel and research grants, we empower students to travel to key locations to collect authentic data for original research, as well as present them at global conferences. Thanks to regular giving, we witnessed a remarkable 49% increase in the number of grants awarded last year, with an average value of nearly £500 per award.



The travel grant allowed me to present at the International Conference on Robotics and Automation (ICRA), showcasing my work using satellite navigation for robot localisation in environments with limited sky visibility, like forests. The idea, inspired by my work on tracking sea turtles, garnered substantial interest. Attending ICRA provided a valuable opportunity to engage with leading robotics researchers, witness the field's remarkable progress, and explore diverse applications. I am grateful for the regular givers to College who enable this enriching experience for me.

Jonas Beuchert (DPhil Autonomous Intelligent Machines and Systems (EPSRC CDT) - Computer Science)



The Power of Giving

Did you know...

£50 per month

pays for a student in financial difficulty to receive an annual bursary

£100 per month

pays for a student's annual Research Support Grant

£150 per month

pays for six students' annual Travel Grants

£200 per month

pays for the annual appointment of a Student Sustainability Ambassador



I am blown away by the generosity of the hardship committee. Please pass on my gratitude. This will be such a relief to my stress levels.

This student received a £500 hardship fund grant and went onto complete their course successfully.



Thanks to the generosity of 1990 Club members, I attended the International Congress of Industrial and Applied Mathematics (ICIAM) in Tokyo. I presented my work on "Redefining the Finite Element" in which I am aiming to construct a more robust definition of the finite element. The finite element method allows engineers and scientists to analyse complex structures and systems, providing insights into their behavior under various conditions without the need for physical prototypes. This funding facilitated my travel to Japan, where I engaged in a productive poster session and discussions with fellow mathematicians.



India Marsden (DPhil Mathematics)



The International Conference of Integrated Care (ICIC) in Antwerp was an invaluable opportunity for me. The conference brought together practitioners, policymakers and patients on integrated care. I presented a very well-received digital poster from an evaluation of integrated testing and was even able to recruit panelists for my upcoming Delphi study! The travel grant from College covered my flights and the conference registration costs. Thank you to all 1990 Club members who made this experience possible for me!

Gamuchirai Pamela Gwaza (DPhil Evidence-Based Health Care)



Enhanced Student Experience

From a dedicated Disability Coordinator, student Peer Supporters and Junior Deans, to weekly yoga sessions and MCR welfare tea and cake drop-ins, to formation of sports teams, regular giving ensures we continue to offer our students the best possible College experience.



Thanks to regular giving support, the Kellogg College Cricket Club was established in 2022. In a short period of time, we have not only seen great success (last season taking home the silverware - coming 2nd out of 29 college teams), but each player has had the opportunity to join a group of passionate, ambitious and like-minded friends to create memorable experiences representing Kellogg across the beautiful pitches of Oxford.



Tim Fraser, MCR Vice President, Cricket Club Captain
(MSc Evidence-Based Health Care)

If you would like for a College student to give you a call and tell you first-hand the difference your regular gift is making, please drop us a line at 1990Club@kellogg.ox.ac.uk They would be delighted to speak to you!

**Once again, thank you for being a 1990 Club member
and for your continued support.**



Kellogg College
University of Oxford

www.kellogg.ox.ac.uk