



Kellogg College
University of Oxford

Kellogg
1990 CLUB

2025 Donor Report

The **impact** of your support





Since the establishment of the 1990 Club in 2020, we have seen regular gift contributions to Kellogg College more than double. It is encouraging to witness our alumni, donors, Fellows, and students around the globe championing the College's vision of promoting lifelong learning through generous recurring gifts.

At Kellogg, we believe in fostering a sustainable world where learning is a lifelong pursuit, empowering individuals to harness their talents, navigate change, and propel humanity forward through discovery and education. Your commitment and support, especially through the 1990 Club, play a vital role in maintaining a distinctive and enriching Oxford experience for our students.

Recurring gifts allow us to plan ahead and undertake projects that are crucial for College's future. Regardless of size, each contribution makes a significant impact, underscoring the profound influence that the connection and generosity shared within our Kellogg community can bring about.

Thank you for your continued support.

Jonathan Michie

Professor Jonathan Michie OBE, FAcSS
President, Kellogg College
Pro-Vice-Chancellor, University of Oxford



Your impact

Last year marked another period of growth for regular giving at Kellogg. **We saw a 17% increase in the number of donors who have graciously committed to making regular contributions through the 1990 Club.** Additionally, many of you who have been long-time members of the 1990 Club have increased the value of your recurring gift to the College. **With the continued expansion of regular giving, we were able to boost philanthropic support from regular gifts by 10% last year.** Your gifts not only helped our incredible graduate students with bursaries, travel, and research grants, but also empowered us to strengthen crucial aspects of College life, addressing areas of greatest need. For instance, additional funding has been made available to support the activities of the Middle Common Room (MCR).

Regular giving through the 1990 Club plays a pivotal role in enabling our students to conduct advanced research at the University and emerge as leaders in their respective fields. This year, thanks to your support, our students have travelled to Canada, Greece, and the United States to present original research at conferences as well as conduct archival research. We are so proud of our students and alumni who are making substantial contributions to societies and economies worldwide, exemplifying the influential impact of Kellogg as a dynamic and thriving global community.

Bursaries

Students should not be held back by personal circumstances or unexpected economic challenges. At Kellogg we are committed to alleviating financial burdens our students may encounter during their studies at the University. Last year Kellogg awarded bursaries to 89% of students who applied, compared to 70% the previous year, with an average disbursement of £684 per student—increasing the amount by nearly £200.



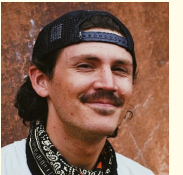


Travel and Research Grants

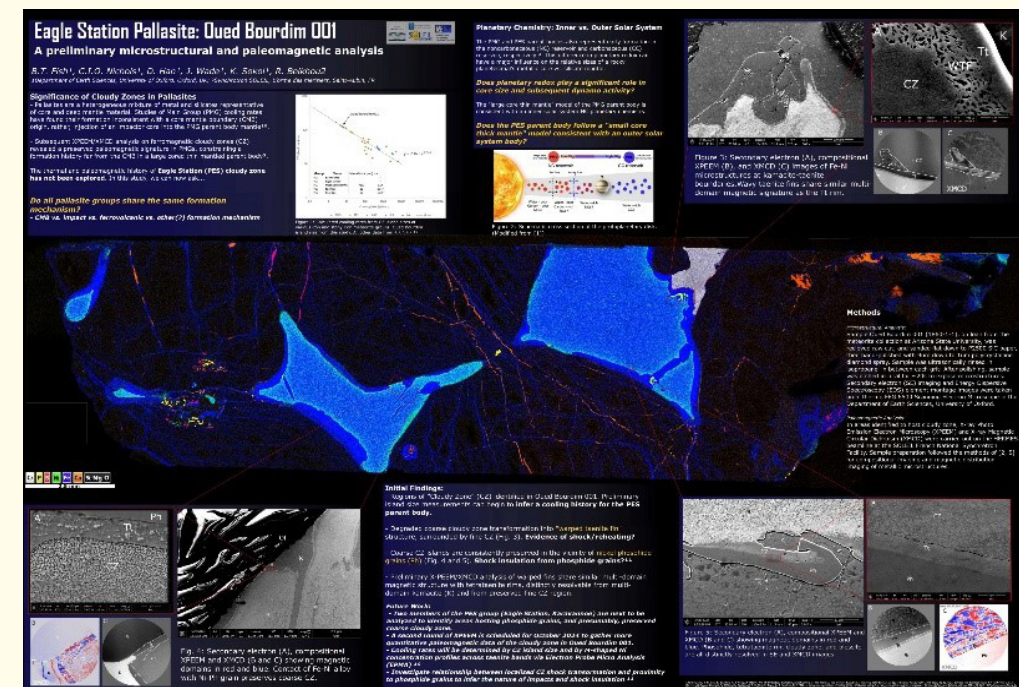
A world-class Oxford education should come with every opportunity for our students to develop their academic excellence. With our travel and research grants, we empower students to travel to key locations to collect authentic data for original research, as well as present them at global conferences. Thanks to regular giving, we awarded 27 grants last year, with an average value of nearly £650 per award – increasing the amount by £150 from the previous year.



During my analyses of meteorites, I have gained valuable insights into the potential nature of my new findings. As time progresses and new discoveries are made, the direction of my research project continues to evolve. The Castle Meeting Conference at Utrecht University introduced me to professionals in the global paleomagnetic and rock magnetic community – these connections are continually shaping and refining my thesis. Moreover, new collaborations are forming for supplementary projects that will contribute holistically to my final body of work as a DPhil student at Kellogg.



Brandon Fish (DPhil Earth Sciences, 2023)



The Power of Giving

Did you know...

£50 per month

pays for a student in financial difficulty to receive an annual bursary

£100 per month

pays for two students' annual Research Support Grant

£150 per month

pays for three students' annual Travel Grants

£200 per month

pays for the annual appointment of a Student Sustainability Ambassador



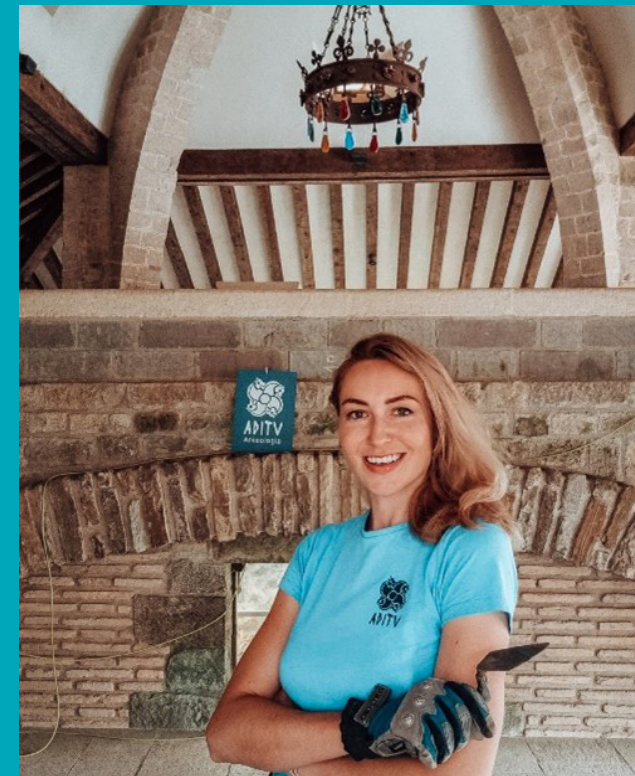
The bursary has been invaluable in allowing me to fully immerse myself in my studies and research at Oxford, without the financial burden weighing heavily on my mind. I am deeply grateful for the support, which has been instrumental in my progress this past year.

Student who recieved a hardship bursary in 2024



Attending the annual American Sociological Association (ASA) conference offered me a valuable opportunity to learn about timely research being conducted at universities and research institutions. Meeting researchers working on related topics and discussing methods for refining each other's research was incredibly valuable in shaping both the theoretical framework and empirical data collection for my dissertation. It also provided an excellent opportunity to build new professional relationships with experts in institutional analysis, technology studies, and survey research methods.

Isabel Goddard (DPhil Info, Comm, and Social Science, 2023)



The information obtained from collections both at the University of Braford and the Royal College of Surgeons Edinburgh has given me a much clearer understanding of the manifestations of perimortem trauma, which I have been able to implement within my DPhil results.

The use of examples from contemporary sites allows me to strongly back up my own results with photographs and descriptions of similar injuries. The financial costs of this research trip were almost completely covered by the travel grant and allowed me to visit both institutions as part of the same visit, which cut down on additional costs and/or the need for a separate trip.

Emma Bonthorne (DPhil Archaeology, 2017)



Enhanced Student Experience

Last year, we continued to enhance Kellogg students' experience by organising many more Welcome Week events, increasing funding for the MCR, extending lunch hours, and hiring more catering staff to support the updated schedule.

We have upgraded three of our student villas to ensure comfort and convenience for resident students. Additionally, we created two new roles in the IT/AV department to support hybrid events, enabling greater participation from our part-time students. At Kellogg, we are dedicated to ensuring an enriching and positive College and Oxford experience for all our students.

These initiatives are made possible through your generous regular giving. Thank you for your continued support.

If you would like for a College student to give you a call and tell you first-hand the difference your regular gift is making, please drop us a line at 1990Club@kellogg.ox.ac.uk They would be delighted to speak to you!

**Once again, thank you for being a 1990 Club member
and for your continued support.**



Kellogg College
University of Oxford

www.kellogg.ox.ac.uk